

\$449,900 - 5112 22 Avenue, Edmonton

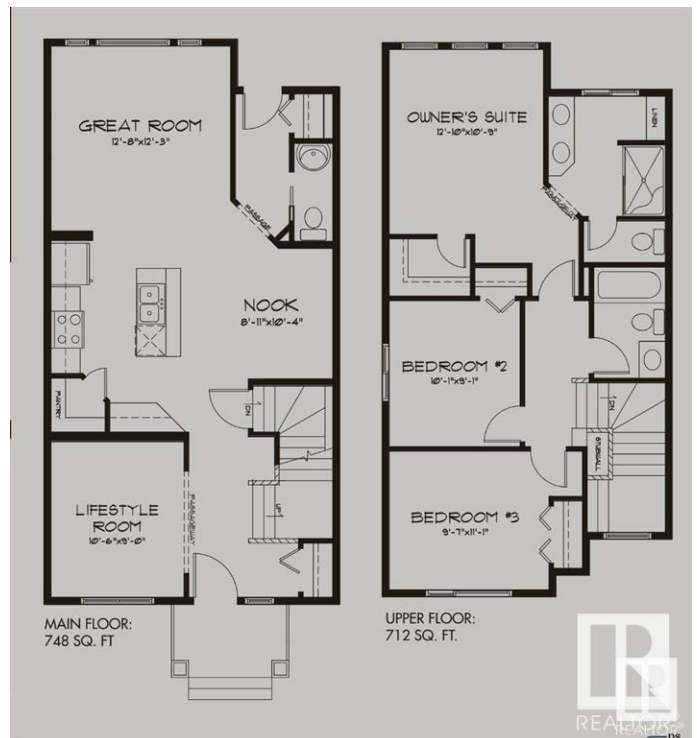
MLS® #E4430170

\$449,900

3 Bedroom, 2.50 Bathroom, 1,446 sqft
Single Family on 0.00 Acres

Walker, Edmonton, AB

Welcome to this stunning end-unit home w/Central AC in the highly desirable Walker neighborhood of southeast Edmonton! Situated just minutes from public schools, parks, and a variety of shopping and dining options, this property offers both convenience and comfort. Built in 2018 by the renowned Pacesetter Homes, known for their exceptional craftsmanship, this home features a spacious main floor den and a formal dining area, perfect for hosting guests. The modern finishes throughout complement the functional design, with 3 spacious bedrooms and 2 full bathrooms upstairs, plus a convenient half bath on the main level. The partially finished basement is drywalled and ready for your personal touch. Additional highlights include double windows, a water softener, and a double detached garage. Outside, you'll find a large, fully landscaped backyard with a rear deck—ideal for outdoor living. Fully fenced and move-in ready, this home is priced to sell and won't last long!



Built in 2018

Essential Information

MLS® #	E4430170
Price	\$449,900
Bedrooms	3

Bathrooms	2.50
Full Baths	2
Half Baths	1
Square Footage	1,446
Acres	0.00
Year Built	2018
Type	Single Family
Sub-Type	Residential Attached
Style	2 Storey
Status	Active

Community Information

Address	5112 22 Avenue
Area	Edmonton
Subdivision	Walker
City	Edmonton
County	ALBERTA
Province	AB
Postal Code	T6X 2H7

Amenities

Amenities	Air Conditioner, Deck, No Animal Home, No Smoking Home, Secured Parking
Parking	Double Garage Detached

Interior

Interior Features	ensuite bathroom
Appliances	See Remarks
Heating	Forced Air-1, Natural Gas
Stories	2
Has Basement	Yes
Basement	Full, Partially Finished

Exterior

Exterior	Wood, Stone, Vinyl
Exterior Features	Back Lane, Commercial, Fenced, Landscaped, Park/Reserve, Playground Nearby, Public Transportation, Schools, Shopping Nearby, See Remarks
Roof	Asphalt Shingles

Construction Wood, Stone, Vinyl
Foundation Concrete Perimeter



School Information

Elementary Shauna MAy Seneca School
Middle Shauna MAy Seneca School
High Elder DR. Francis Whiskey

Additional Information

Date Listed April 10th, 2025
Days on Market 9
Zoning Zone 53

DATA IS DEEMED RELIABLE BUT IS NOT GUARANTEED ACCURATE BY THE REALTORS® ASSOCIATION OF EDMONTON. COPYRIGHT 2025 BY THE REALTORS® ASSOCIATION OF EDMONTON. ALL RIGHTS RESERVED.Trademarks are owned or controlled by the Canadian Real Estate Association (CREA) and identify real estate professionals who are members of CREA (REALTOR®, REALTORS®) and/or the quality of services they provide (MLS®, Multiple Listing Service®)
Listing information last updated on April 19th, 2025 at 8:47am MDT