

Courtesy Of Tim Jeong Of RE/MAX River City

\$559,900 - 20 Emery Court, St. Albert

MLS® #E4429284

\$559,900

4 Bedroom, 3.00 Bathroom, 2,026 sqft
Single Family on 0.00 Acres

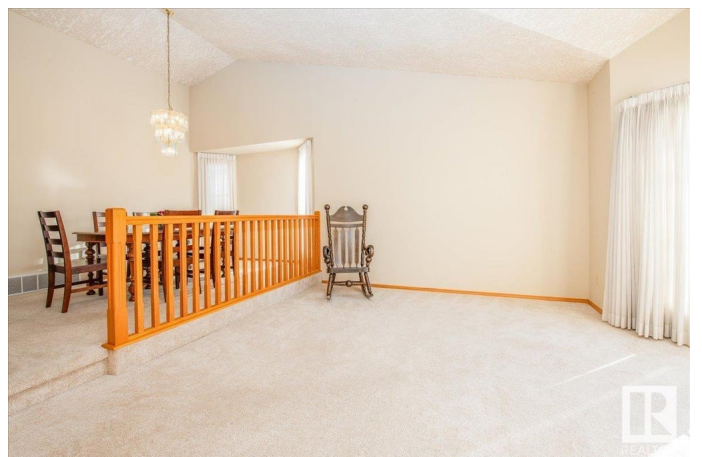
Erin Ridge, St. Albert, AB

Located in a quiet cul-de-sac in Erin Ridge, this stunning 4-bedroom side split with a double attached heated garage offers over 2,640 sq.ft. of living space and a HUGE park-like yard. The open floor plan features vaulted ceilings and a living room that flows into the formal dining area. The chef's kitchen boasts granite countertops, a tile backsplash, center island with pendant lighting, and stainless steel appliances. The dinette offers access to the back deck, perfect for outdoor relaxation. A cozy family room with a brick-faced fireplace, a bedroom, 3-piece bath, laundry, and garage access are on the lower level. Upstairs, the master suite includes a walk-in closet and 3-piece ensuite, with two more bedrooms and a 4-piece main bath. The fully developed basement includes a spacious rec room, storage, and crawl space. Enjoy countless hours in the fully fenced backyard, surrounded by mature trees. This home is a true must-see!

Built in 1990

Essential Information

MLS® #	E4429284
Price	\$559,900
Bedrooms	4
Bathrooms	3.00



Full Baths	3
Square Footage	2,026
Acres	0.00
Year Built	1990
Type	Single Family
Sub-Type	Detached Single Family
Style	4 Level Split
Status	Active

Community Information

Address	20 Emery Court
Area	St. Albert
Subdivision	Erin Ridge
City	St. Albert
County	ALBERTA
Province	AB
Postal Code	T8N 5T3

Amenities

Amenities	Crawl Space, Deck, Vaulted Ceiling, See Remarks
Parking	Double Garage Attached

Interior

Interior Features	ensuite bathroom
Appliances	Dishwasher-Built-In, Dryer, Garage Control, Garage Opener, Hood Fan, Oven-Microwave, Refrigerator, Stove-Electric, Vacuum System Attachments, Washer, Window Coverings, Garage Heater
Heating	Forced Air-1, Natural Gas
Fireplace	Yes
Fireplaces	Brass Surround, Mantel, See Remarks
Stories	4
Has Basement	Yes
Basement	Full, Finished

Exterior

Exterior	Wood, Brick, Vinyl
Exterior Features	Cul-De-Sac, Fenced, Landscaped, Public Transportation, Schools, Shopping Nearby, See Remarks
Roof	Asphalt Shingles

Construction Wood, Brick, Vinyl
Foundation Concrete Perimeter

Additional Information

Date Listed April 5th, 2025
Days on Market 3
Zoning Zone 24

DATA IS DEEMED RELIABLE BUT IS NOT GUARANTEED ACCURATE BY THE REALTORS® ASSOCIATION OF EDMONTON. COPYRIGHT 2025 BY THE REALTORS® ASSOCIATION OF EDMONTON. ALL RIGHTS RESERVED. Trademarks are owned or controlled by the Canadian Real Estate Association (CREA) and identify real estate professionals who are members of CREA (REALTOR®, REALTORS®) and/or the quality of services they provide (MLS®, Multiple Listing Service®)

Listing information last updated on April 8th, 2025 at 2:47pm MDT