

\$759,000 - 30 Avonlea Way, Spruce Grove

MLS® #E4429233

\$759,000

3 Bedroom, 2.00 Bathroom, 1,864 sqft

Single Family on 0.00 Acres

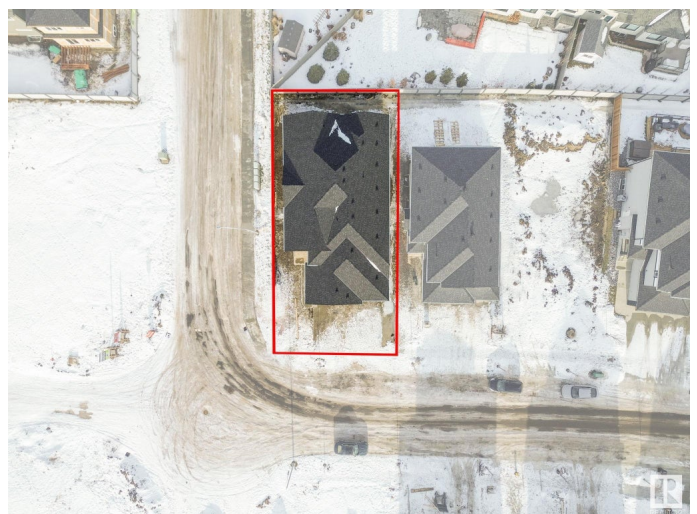
Jesperdale, Spruce Grove, AB

If you have been looking for a large Executive Bungalow - then this is your House. WOW Huge 3 Bedroom Bungalow at an unreal price. This home is loaded with Custom features: Including 10 Ft Main Floor Ceilings, Wide plank Engineered flooring, Custom Tile Work throughout, Huge Entertainers Kitchen with Butler Nook (extended Cabinetry). Upgraded Stainless Steel Appliances, Upgraded lighting and Hardware PKG, Custom Kitchen Cabinets, Walk In Pantry, Main floor features, Huge Open Concept Great Room with Custom Fireplace. Huge Spa Like Ensuite off Master. Full sized Laundry room with Sink. Triple Garage will come with a main floor drain & gas line to install future Heater. Great House on a great Street.

Built in 2024

Essential Information

| | |
|----------------|-----------|
| MLS® # | E4429233 |
| Price | \$759,000 |
| Bedrooms | 3 |
| Bathrooms | 2.00 |
| Full Baths | 2 |
| Square Footage | 1,864 |
| Acres | 0.00 |
| Year Built | 2024 |



| | |
|----------|------------------------|
| Type | Single Family |
| Sub-Type | Detached Single Family |
| Style | Bungalow |
| Status | Active |

Community Information

| | |
|-------------|----------------|
| Address | 30 Avonlea Way |
| Area | Spruce Grove |
| Subdivision | Jesperdale |
| City | Spruce Grove |
| County | ALBERTA |
| Province | AB |
| Postal Code | T7X 0Y3 |

Amenities

| | |
|----------------|------------------------|
| Amenities | Ceiling 10 ft. |
| Parking Spaces | 6 |
| Parking | Triple Garage Attached |

Interior

| | |
|-------------------|---|
| Interior Features | ensuite bathroom |
| Appliances | Dishwasher-Built-In, Dryer, Hood Fan, Oven-Built-In, Oven-Microwave, Refrigerator, Stove-Countertop Gas, Washer |
| Heating | Forced Air-1, Natural Gas |
| Stories | 1 |
| Has Basement | Yes |
| Basement | Full, Unfinished |

Exterior

| | |
|-------------------|--|
| Exterior | Wood, Stone, Vinyl |
| Exterior Features | Corner Lot, Golf Nearby, No Back Lane, Public Transportation, Schools, Shopping Nearby |
| Roof | Asphalt Shingles |
| Construction | Wood, Stone, Vinyl |
| Foundation | Concrete Perimeter |

Additional Information

| | |
|----------------|-----------------|
| Date Listed | April 4th, 2025 |
| Days on Market | 16 |

Zoning

Zone 91

DATA IS DEEMED RELIABLE BUT IS NOT GUARANTEED ACCURATE BY THE REALTORS® ASSOCIATION OF EDMONTON. COPYRIGHT 2025 BY THE REALTORS® ASSOCIATION OF EDMONTON. ALL RIGHTS RESERVED. Trademarks are owned or controlled by the Canadian Real Estate Association (CREA) and identify real estate professionals who are members of CREA (REALTOR®, REALTORS®) and/or the quality of services they provide (MLS®, Multiple Listing Service®)

Listing information last updated on April 20th, 2025 at 9:17pm MDT