

Courtesy Of Don Boonstra Of 2% Realty Pro

\$385,000 - 12136 38 Street, Edmonton

MLS® #E4428099

\$385,000

5 Bedroom, 2.00 Bathroom, 946 sqft
Single Family on 0.00 Acres

Beacon Heights, Edmonton, AB

Welcome to this beautifully updated raised bungalow boasting 5 bedrooms (3 on the main floor), 2 full bathrooms, and has been completely renovated to offer modern comfort and style. Step inside to find fresh paint, brand-new vinyl windows, and gorgeous new flooring throughout. The main floor features a bright and open layout with a spacious family room, perfect for gathering and relaxing. The kitchen is equipped with brand new stainless steel appliances. The lower level is just as impressive, with 2 additional bedrooms and a large family area that flood with natural light, creating a welcoming and airy atmosphere. The property includes a delightful yard complete with a large, covered patio, alongside a substantial double garage, equipped with a furnace. Located just minutes from schools, playgrounds, and parks, this home offers a fantastic lifestyle in a family-friendly neighborhood. Donâ€™t miss out on this turn-key property!

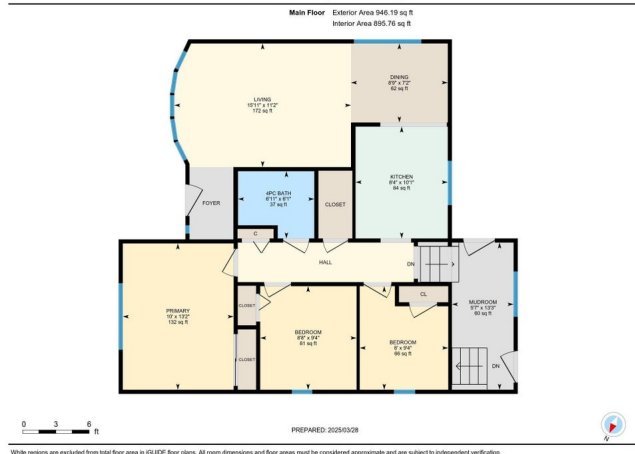
Built in 1958

Essential Information

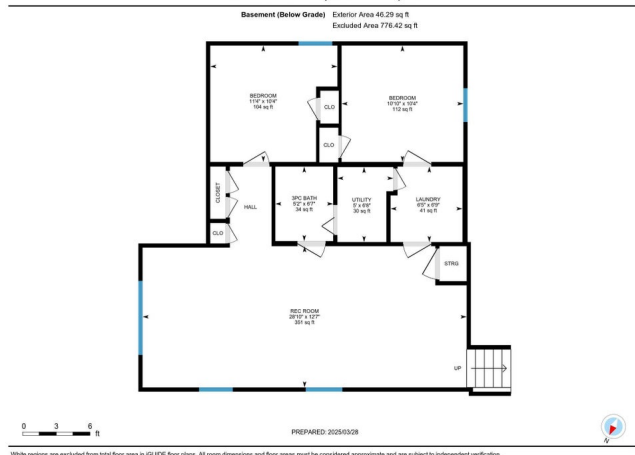
MLS® #	E4428099
Price	\$385,000
Bedrooms	5
Bathrooms	2.00



12136 38 St NW, Edmonton, AB



12136 38 St NW, Edmonton, AB



Full Baths	2
Square Footage	946
Acres	0.00
Year Built	1958
Type	Single Family
Sub-Type	Detached Single Family
Style	Bungalow
Status	Active

Community Information

Address	12136 38 Street
Area	Edmonton
Subdivision	Beacon Heights
City	Edmonton
County	ALBERTA
Province	AB
Postal Code	T5W 2J1

Amenities

Amenities	Vinyl Windows
Parking	Double Garage Detached, Single Carport

Interior

Appliances	Dishwasher-Built-In, Dryer, Refrigerator, Stove-Countertop Electric, Washer
Heating	Forced Air-1, Natural Gas
Stories	2
Has Basement	Yes
Basement	Full, Finished

Exterior

Exterior	Wood, Metal, Stucco
Exterior Features	Back Lane, Fenced, Playground Nearby, Public Swimming Pool, Schools, Shopping Nearby
Roof	Asphalt Shingles
Construction	Wood, Metal, Stucco
Foundation	Concrete Perimeter

Additional Information

Date Listed March 28th, 2025

Days on Market 9

Zoning Zone 23

DATA IS DEEMED RELIABLE BUT IS NOT GUARANTEED ACCURATE BY THE REALTORS® ASSOCIATION OF EDMONTON. COPYRIGHT 2025 BY THE REALTORS® ASSOCIATION OF EDMONTON. ALL RIGHTS RESERVED. Trademarks are owned or controlled by the Canadian Real Estate Association (CREA) and identify real estate professionals who are members of CREA (REALTOR®, REALTORS®) and/or the quality of services they provide (MLS®, Multiple Listing Service®)

Listing information last updated on April 6th, 2025 at 9:32am MDT