

\$449,000 - 8911 162 Street, Edmonton

MLS® #E4427690

\$449,000

3 Bedroom, 1.00 Bathroom, 1,031 sqft
Single Family on 0.00 Acres

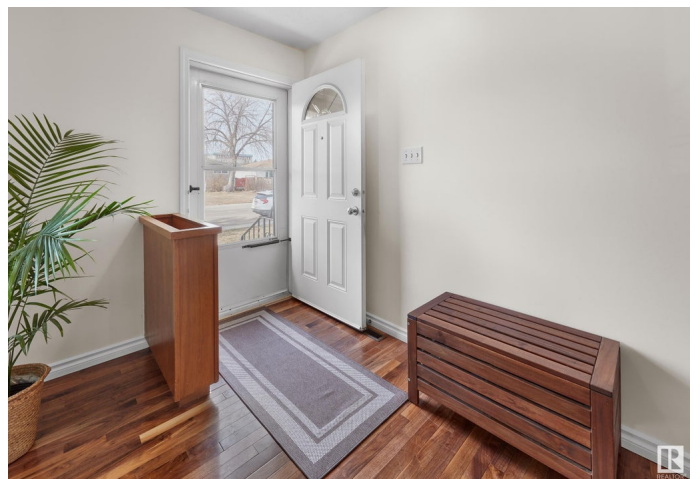
Meadowlark Park (Edmonton), Edmonton, AB

Meadowlark Park â€” the family community you have been looking for â€” with tree lined streets, parks/playgrounds, schools & close to all amenities! This 1965 home has 2062sqft of finished living space (including the basement) â€” 3 bedrooms, renovated 4-piece bath, oversized double detached heated garage â€” all located on a 5500sqft landscaped lot! Entering the home, you will love the newer windows, hardwood flooring & large living room that is open to the dining area & the open concept kitchen with ample storage & counter space. Down the hallway you will find the large primary bedroom, beds #2 & #3 are both a good size & the 4-piece bath completes the main floor. Downstairs step into the large family room & games/kidsâ€™ area & relax, the laundry room & large storage area complete the basement. Upgrades throughout the years â€” AC, roof, windows, flooring, paint & exterior & more!

Built in 1965

Essential Information

MLS® #	E4427690
Price	\$449,000
Bedrooms	3
Bathrooms	1.00
Full Baths	1



Square Footage	1,031
Acres	0.00
Year Built	1965
Type	Single Family
Sub-Type	Detached Single Family
Style	Bungalow
Status	Active

Community Information

Address	8911 162 Street
Area	Edmonton
Subdivision	Meadowlark Park (Edmonton)
City	Edmonton
County	ALBERTA
Province	AB
Postal Code	T5R 2M5

Amenities

Amenities	Air Conditioner, Detectors Smoke, Parking-Extra, Vinyl Windows
Parking Spaces	4
Parking	Double Garage Detached, Heated, Over Sized

Interior

Appliances	Dishwasher-Built-In, Dryer, Garage Control, Garage Opener, Refrigerator, Stove-Electric, Washer
Heating	Forced Air-1, Natural Gas
Stories	2
Has Basement	Yes
Basement	Full, Finished

Exterior

Exterior	Wood, Stucco
Exterior Features	Back Lane, Fenced, Landscaped, Park/Reserve, Paved Lane, Playground Nearby, Public Transportation, Schools, Shopping Nearby
Roof	Asphalt Shingles
Construction	Wood, Stucco
Foundation	Concrete Perimeter

School Information

Elementary	MeadowLark School
Middle	Hillcrest School
High	Jasper Place School

Additional Information

Date Listed March 27th, 2025

Days on Market 14

Zoning Zone 22

DATA IS DEEMED RELIABLE BUT IS NOT GUARANTEED ACCURATE BY THE REALTORS® ASSOCIATION OF EDMONTON. COPYRIGHT 2025 BY THE REALTORS® ASSOCIATION OF EDMONTON. ALL RIGHTS RESERVED. Trademarks are owned or controlled by the Canadian Real Estate Association (CREA) and identify real estate professionals who are members of CREA (REALTOR®, REALTORS®) and/or the quality of services they provide (MLS®, Multiple Listing Service®)

Listing information last updated on April 10th, 2025 at 2:32am MDT