

# \$0 - 5607 Gateway Boulevard, Edmonton

MLS® #E4425572

**\$0**

0 Bedroom, 0.00 Bathroom,  
Retail on 0.00 Acres

Calgary Trail North, Edmonton, AB

Gateway 56 offers flex retail/warehouse spaces ranging from 2,977 sq.ft.± to 14,732 sq.ft.± with high exposure along Gateway Boulevard and easy access to Whitemud Drive and Anthony Henday. The property features rear-grade loading, marshalling areas, and flexible configurations for office, showroom, or warehouse use. Ceiling heights range from 13'± clear and 15'± to deck, with various unit layouts including reception areas, offices, and open showroom spaces.

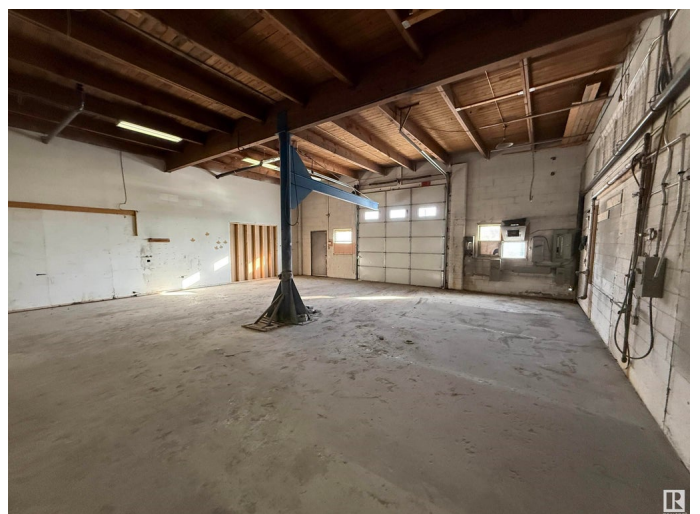
Built in 1966

## Essential Information

|            |          |
|------------|----------|
| MLS® #     | E4425572 |
| Bathrooms  | 0.00     |
| Acres      | 0.00     |
| Year Built | 1966     |
| Type       | Retail   |
| Status     | Active   |

## Community Information

|             |                        |
|-------------|------------------------|
| Address     | 5607 Gateway Boulevard |
| Area        | Edmonton               |
| Subdivision | Calgary Trail North    |
| City        | Edmonton               |
| County      | ALBERTA                |
| Province    | AB                     |



Postal Code T6H 2H3

### **Exterior**

Exterior Mixed

Construction Mixed

### **Additional Information**

Date Listed March 13th, 2025

Days on Market 22

Zoning Zone 41

DATA IS DEEMED RELIABLE BUT IS NOT GUARANTEED ACCURATE BY THE REALTORS® ASSOCIATION OF EDMONTON. COPYRIGHT 2025 BY THE REALTORS® ASSOCIATION OF EDMONTON. ALL RIGHTS RESERVED. Trademarks are owned or controlled by the Canadian Real Estate Association (CREA) and identify real estate professionals who are members of CREA (REALTOR®, REALTORS®) and/or the quality of services they provide (MLS®, Multiple Listing Service®)

Listing information last updated on April 4th, 2025 at 3:02am MDT