

\$0 - 13939 156 Street, Edmonton

MLS® #E4424939

\$0

0 Bedroom, 0.00 Bathroom,
Industrial on 0.00 Acres

Mistatim Industrial, Edmonton, AB

The property is 3,300sq.ft.± of Office/Warehouse Space. It features both grade loading. Conveniently located just off 137 Avenue and 156 Street, the site offers quick access to major routes, including St. Albert Trail, Yellowhead Trail, and Anthony Henday Drive. This property is ideal for businesses in manufacturing, transportation and logistics, retail showrooms, and more.

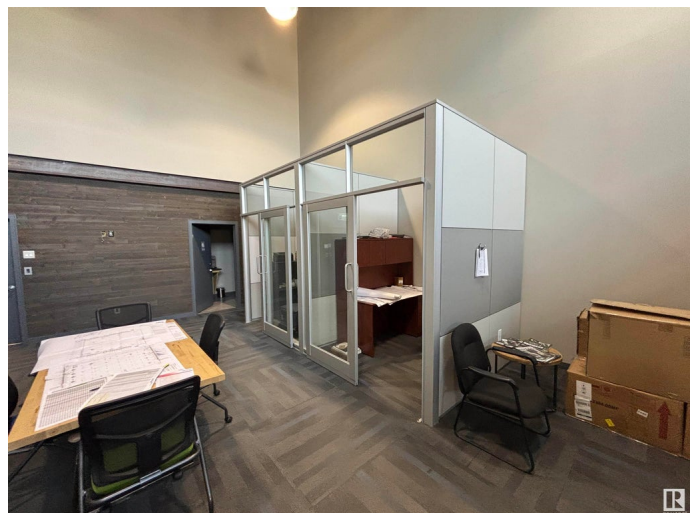
Built in 2017

Essential Information

| | |
|------------|------------|
| MLS® # | E4424939 |
| Bathrooms | 0.00 |
| Acres | 0.00 |
| Year Built | 2017 |
| Type | Industrial |
| Status | Active |

Community Information

| | |
|-------------|---------------------|
| Address | 13939 156 Street |
| Area | Edmonton |
| Subdivision | Mistatim Industrial |
| City | Edmonton |
| County | ALBERTA |
| Province | AB |
| Postal Code | T6V 1J1 |



Exterior

| | |
|--------------|-------|
| Exterior | Mixed |
| Construction | Mixed |

Additional Information

| | |
|----------------|------------------|
| Date Listed | March 10th, 2025 |
| Days on Market | 24 |
| Zoning | Zone 40 |

DATA IS DEEMED RELIABLE BUT IS NOT GUARANTEED ACCURATE BY THE REALTORS® ASSOCIATION OF EDMONTON. COPYRIGHT 2025 BY THE REALTORS® ASSOCIATION OF EDMONTON. ALL RIGHTS RESERVED. Trademarks are owned or controlled by the Canadian Real Estate Association (CREA) and identify real estate professionals who are members of CREA (REALTOR®, REALTORS®) and/or the quality of services they provide (MLS®, Multiple Listing Service®)

Listing information last updated on April 3rd, 2025 at 2:47pm MDT