

\$0 - 6410 104 St, Edmonton

MLS® #E4424924

\$0

0 Bedroom, 0.00 Bathroom,
Office on 0.00 Acres

Allendale, Edmonton, AB

Newly constructed office space for lease. 1000 sq ft +/- Conveniently situated in central South Edmonton, with easy access to major routes with visibility from 104th Street Southbound with VPD of 22,800. 2 assigned parking stalls. \$2900/month gross lease

Built in 2020

Essential Information

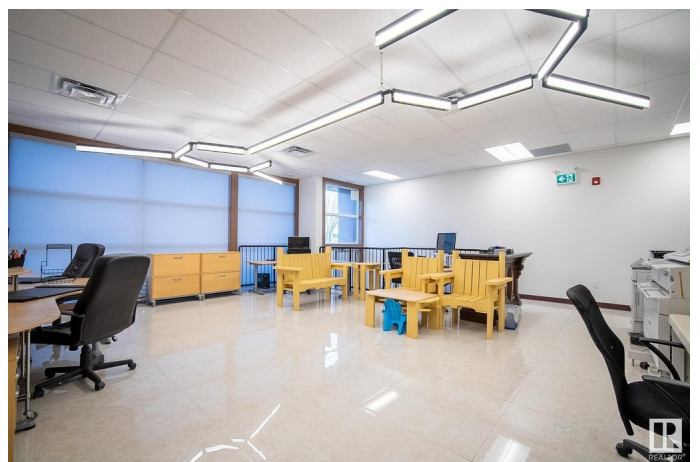
| | |
|------------|----------|
| MLS® # | E4424924 |
| Bathrooms | 0.00 |
| Acres | 0.00 |
| Year Built | 2020 |
| Type | Office |
| Status | Active |

Community Information

| | |
|-------------|-------------|
| Address | 6410 104 St |
| Area | Edmonton |
| Subdivision | Allendale |
| City | Edmonton |
| County | ALBERTA |
| Province | AB |
| Postal Code | T6H 2L2 |

Exterior

| | |
|----------|------------|
| Exterior | Wood Frame |
|----------|------------|



Construction Wood Frame

Additional Information

Date Listed March 10th, 2025

Days on Market 26

Zoning Zone 15

DATA IS DEEMED RELIABLE BUT IS NOT GUARANTEED ACCURATE BY THE REALTORS® ASSOCIATION OF EDMONTON. COPYRIGHT 2025 BY THE REALTORS® ASSOCIATION OF EDMONTON. ALL RIGHTS RESERVED. Trademarks are owned or controlled by the Canadian Real Estate Association (CREA) and identify real estate professionals who are members of CREA (REALTOR®, REALTORS®) and/or the quality of services they provide (MLS®, Multiple Listing Service®)

Listing information last updated on April 4th, 2025 at 11:32pm MDT