

Courtesy Of Yad Dhillon Of Nationwide Realty Corp

\$629,500 - 6327 17 Street, Rural Leduc County

MLS® #E4424650

\$629,500

4 Bedroom, 3.00 Bathroom, 2,256 sqft

Rural on 0.12 Acres

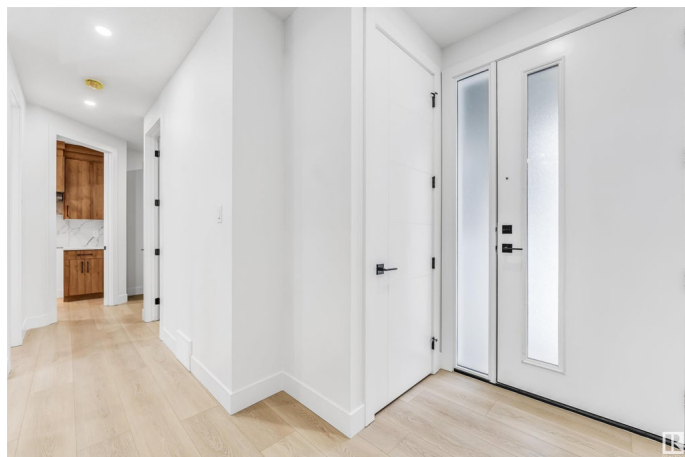
Irvin Creek, Rural Leduc County, AB

Welcome to IRVINE CREEK!**MAIN FLOOR BED - FULL BATH** Nestled beyond the bustling city limits, this stunning brand-new home under construction offers the perfect blend of modern design and tranquil living. Featuring 4 spacious bedrooms, including a convenient main-floor bedroom and primary suite upstairs, this home ensures comfort and privacy for the entire family. Step inside to be welcomed by Spacious foyer and a chef-inspired kitchen, complete with a functional spice kitchen. Thoughtfully designed with 8-foot doors on the main floor, oversized triple-pane windows, and a side entrance for future basement development, this home caters to your family's every need. Located just minutes from the airport, schools, shopping, and other amenities, Irvine Creek is the ideal setting for your dream family home. Experience serenity and convenience all in one place.

Built in 2024

Essential Information

MLS® #	E4424650
Price	\$629,500
Bedrooms	4
Bathrooms	3.00
Full Baths	3



Square Footage	2,256
Acres	0.12
Year Built	2024
Type	Rural
Sub-Type	Detached Single Family
Style	2 Storey
Status	Active

Community Information

Address	6327 17 Street
Area	Rural Leduc County
Subdivision	Irvin Creek
City	Rural Leduc County
County	ALBERTA
Province	AB
Postal Code	T4X 0P5

Amenities

Features	Carbon Monoxide Detectors, Detectors Smoke
----------	--

Interior

Interior Features	ensuite bathroom
Heating	Forced Air-1, Natural Gas
Stories	2
Has Basement	Yes
Basement	Full, Unfinished

Exterior

Exterior	Wood
Exterior Features	Airport Nearby, Playground Nearby, Shopping Nearby
Construction	Wood
Foundation	Concrete Perimeter

Additional Information

Date Listed	March 7th, 2025
Days on Market	32
Zoning	Zone 80

DATA IS DEEMED RELIABLE BUT IS NOT GUARANTEED ACCURATE BY THE REALTORS® ASSOCIATION OF EDMONTON. COPYRIGHT 2025 BY THE REALTORS® ASSOCIATION OF EDMONTON. ALL RIGHTS RESERVED. Trademarks are owned or controlled by the Canadian Real Estate Association (CREA) and identify real

estate professionals who are members of CREA (REALTOR®®, REALTORS®®) and/or the quality of services they provide (MLS®®, Multiple Listing Service®®)

Listing information last updated on April 8th, 2025 at 12:02am MDT