

## \$424,900 - 2619 Maple Way, Edmonton

MLS® #E4423268

**\$424,900**

3 Bedroom, 2.50 Bathroom, 1,351 sqft  
Single Family on 0.00 Acres

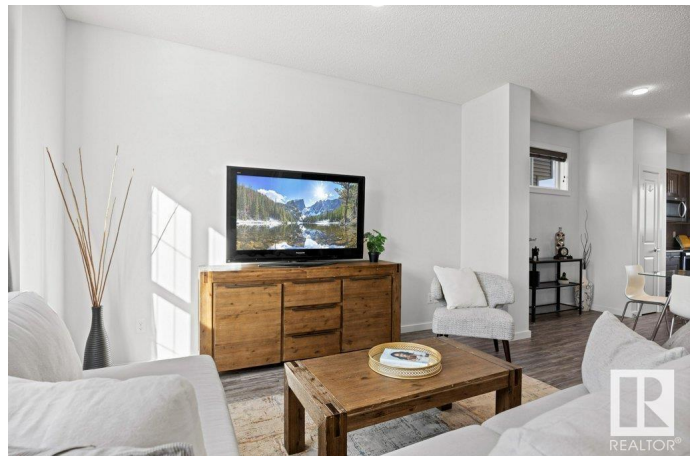
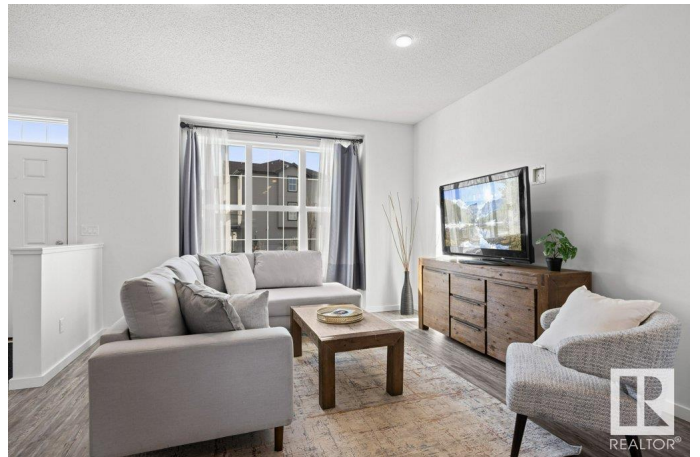
Maple Crest, Edmonton, AB

New on the market, 2619 Maple Way NW! A beautifully designed 3-bedroom, 2.5-bathroom home that combines style, comfort, and functionality. This FRESHLY PAINTED home features an open-concept main floor where the living, dining, and kitchen areas flow seamlessly together, perfect for having family gatherings. The kitchen boasts stunning cabinetry, sleek stainless steel appliances, and a light gray tile backsplash, adding a modern touch. Large windows on both levels flood the home with natural light, creating a warm and inviting atmosphere. Upstairs, the spacious primary bedroom is a true retreat, complete with a walk-in closet and a 4-piece ensuite. Two additional bedrooms provide ample space for family, guests, or a home office. Also located upstairs is the laundry! Fully fenced yard provides privacy to enjoy the outdoors. Located in a desirable neighborhood, this home offers both convenience and charm!

Built in 2019

### Essential Information

MLS® #	E4423268
Price	\$424,900
Bedrooms	3
Bathrooms	2.50
Full Baths	2



Half Baths	1
Square Footage	1,351
Acres	0.00
Year Built	2019
Type	Single Family
Sub-Type	Residential Attached
Style	2 Storey
Status	Active

### **Community Information**

Address	2619 Maple Way
Area	Edmonton
Subdivision	Maple Crest
City	Edmonton
County	ALBERTA
Province	AB
Postal Code	T6T 2K1

### **Amenities**

Amenities	Deck
Parking	Double Garage Detached

### **Interior**

Interior Features	ensuite bathroom
Appliances	Dishwasher-Built-In, Dryer, Garage Control, Garage Opener, Microwave Hood Fan, Refrigerator, Stove-Electric, Washer
Heating	Forced Air-1, Natural Gas
Stories	2
Has Basement	Yes
Basement	Full, Unfinished

### **Exterior**

Exterior	Wood, Vinyl
Exterior Features	Back Lane, Fenced, Landscaped, Level Land, Schools, Shopping Nearby
Roof	Asphalt Shingles
Construction	Wood, Vinyl
Foundation	Concrete Perimeter

### **Additional Information**

Date Listed February 28th, 2025

Days on Market 14

Zoning Zone 30

DATA IS DEEMED RELIABLE BUT IS NOT GUARANTEED ACCURATE BY THE REALTORS® ASSOCIATION OF EDMONTON. COPYRIGHT 2025 BY THE REALTORS® ASSOCIATION OF EDMONTON. ALL RIGHTS RESERVED. Trademarks are owned or controlled by the Canadian Real Estate Association (CREA) and identify real estate professionals who are members of CREA (REALTOR®, REALTORS®) and/or the quality of services they provide (MLS®, Multiple Listing Service®)

Listing information last updated on March 14th, 2025 at 9:32am MDT