

# \$379,900 - 58 1816 Rutherford Road, Edmonton

MLS® #E4423119

**\$379,900**

3 Bedroom, 2.50 Bathroom, 1,550 sqft  
Condo / Townhouse on 0.00 Acres

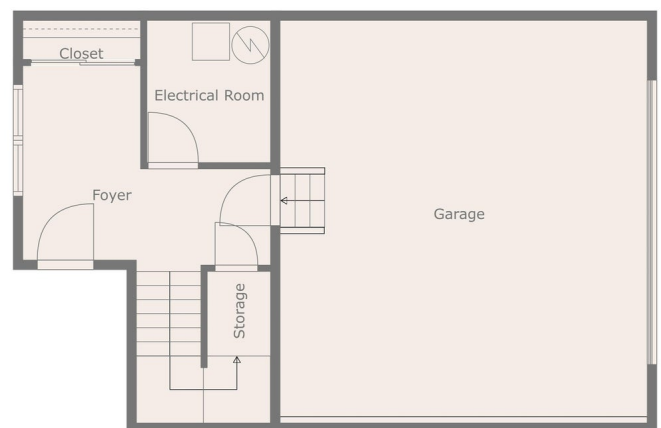
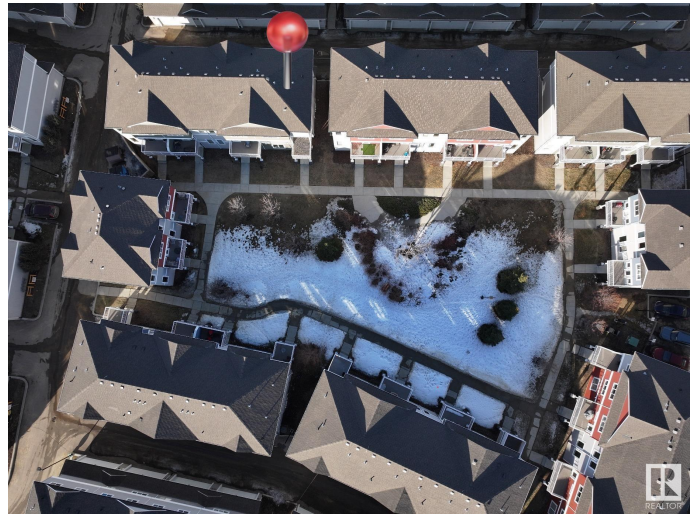
Rutherford (Edmonton), Edmonton, AB

Investor and First-Time Home Buyer ALERT in Rutherford! Welcome to this 1550 sqft, 3 bedroom 2.5 bathroom two-story townhouse with DOUBLE-ATTACHED garage and MAIN FLOOR DEN. This SOUTHWEST PARK-FACING home invites comfort, and exudes classic elegance. Enjoy gatherings in the generously-sized living and dining areas with huge windows Upper level offers 3 bright spacious sized bedrooms with 3 piece master en-suite and large walk-in closet. Conveniently located near South Common Shopping Center, walking paths, parks, schools, public transit, and Anthony Henday.

Built in 2014

## Essential Information

MLS® #	E4423119
Price	\$379,900
Bedrooms	3
Bathrooms	2.50
Full Baths	2
Half Baths	1
Square Footage	1,550
Acres	0.00
Year Built	2014
Type	Condo / Townhouse
Sub-Type	Townhouse



Measurements Are Deemed Highly Accurate, But Not Guaranteed.

Style 3 Storey  
Status Active

### Community Information

Address 58 1816 Rutherford Road  
Area Edmonton  
Subdivision Rutherford (Edmonton)  
City Edmonton  
County ALBERTA  
Province AB  
Postal Code T6W 2K6

### Amenities

Amenities No Animal Home, No Smoking Home, Patio  
Parking Double Garage Attached

### Interior

Interior Features ensuite bathroom  
Appliances Dishwasher-Built-In, Garage Control, Garage Opener, Hood Fan, Refrigerator, Stacked Washer/Dryer, Stove-Electric, Window Coverings  
Heating Forced Air-1, Natural Gas  
Stories 3  
Has Basement Yes  
Basement None, No Basement

### Exterior

Exterior Wood, Asphalt, Stone, Vinyl  
Exterior Features Playground Nearby, Public Transportation, Schools, Shopping Nearby  
Roof Asphalt Shingles  
Construction Wood, Asphalt, Stone, Vinyl  
Foundation Concrete Perimeter

### School Information

Elementary Johnny Bright School  
Middle Johnny Bright School  
High Dr. Anne Anderson School

### Additional Information

Date Listed February 27th, 2025  
Days on Market 42

Zoning	Zone 55
Condo Fee	\$241

DATA IS DEEMED RELIABLE BUT IS NOT GUARANTEED ACCURATE BY THE REALTORS® ASSOCIATION OF EDMONTON. COPYRIGHT 2025 BY THE REALTORS® ASSOCIATION OF EDMONTON. ALL RIGHTS RESERVED. Trademarks are owned or controlled by the Canadian Real Estate Association (CREA) and identify real estate professionals who are members of CREA (REALTOR®, REALTORS®) and/or the quality of services they provide (MLS®, Multiple Listing Service®)

Listing information last updated on April 10th, 2025 at 6:17am MDT