

Courtesy Of Fadi Georgi and Megan Benoit Of MaxWell Polaris

\$739,900 - 3651 8 Street, Edmonton

MLS® #E4420485

\$739,900

5 Bedroom, 3.50 Bathroom, 2,867 sqft
Single Family on 0.00 Acres

Maple Crest, Edmonton, AB

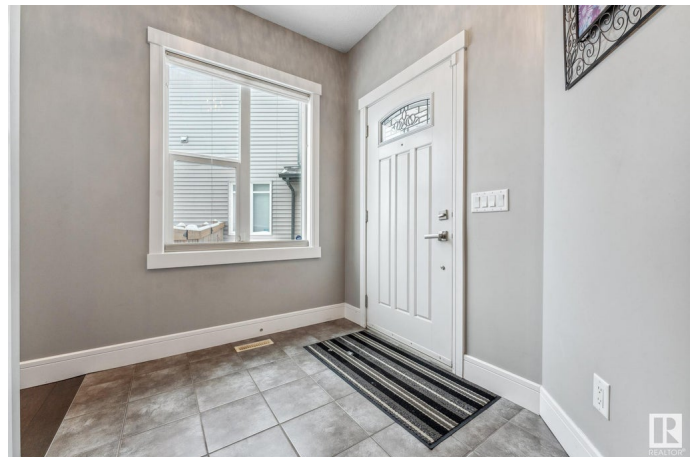
Nestled in a cul-de-sac, this Custom Home sits on a pie-shaped lot with heaps of privacy. The home greets you in an entry with a grand curved staircase. The Great Room has 9-foot ceilings, hardwood floors, & gas fireplace creating a cozy atmosphere. The Gourmet Kitchen boasts highend Maple cabinetry, a large island, granite countertops in a Brown hue, walk-thru butler's pantry (features extra fridge/sink) leads to a mudroom & garage- perfect for families. Upstairs the home offers 3 bedrooms; the Master retreat with a walk-in closet and spa-like 5-piece ensuite bath, two bedrooms ideal for children/guests, top-floor laundry room and 18' x 15' family room. The completed basement is for versatile living, featuring an office, family room an exercise area, a 4th bedroom, and a luxurious 4-piece bathroom with heated floors. Step outside to enjoy the three-tier deck with 2 gas hook-ups, perfect for entertaining. This private oasis overlooks landscaped yard with garden beds. Air conditioning, central vac included

Built in 2014

Essential Information

MLS® # E4420485

Price \$739,900



| | |
|----------------|------------------------|
| Bedrooms | 5 |
| Bathrooms | 3.50 |
| Full Baths | 3 |
| Half Baths | 1 |
| Square Footage | 2,867 |
| Acres | 0.00 |
| Year Built | 2014 |
| Type | Single Family |
| Sub-Type | Detached Single Family |
| Style | 2 Storey |
| Status | Active |

Community Information

| | |
|-------------|---------------|
| Address | 3651 8 Street |
| Area | Edmonton |
| Subdivision | Maple Crest |
| City | Edmonton |
| County | ALBERTA |
| Province | AB |
| Postal Code | T6T 0S4 |

Amenities

| | |
|----------------|------------------------|
| Amenities | Deck, See Remarks |
| Parking Spaces | 4 |
| Parking | Double Garage Attached |

Interior

| | |
|-------------------|---|
| Interior Features | ensuite bathroom |
| Appliances | Air Conditioning-Central, Dishwasher-Built-In, Dryer, Garage Opener, Microwave Hood Fan, Refrigerator, Stove-Electric, Washer, Window Coverings |
| Heating | Forced Air-1, Natural Gas |
| Fireplace | Yes |
| Fireplaces | Mantel, Tile Surround |
| Stories | 3 |
| Has Basement | Yes |
| Basement | Full, Finished |

Exterior

| | |
|-------------------|---|
| Exterior | Wood, Brick, Vinyl |
| Exterior Features | Airport Nearby, Fenced, Landscaped, Playground Nearby, Public Swimming Pool, Public Transportation, Schools, Shopping Nearby, See Remarks |
| Roof | Asphalt Shingles |
| Construction | Wood, Brick, Vinyl |
| Foundation | Concrete Perimeter |

Additional Information

Date Listed February 6th, 2025

Days on Market 36

Zoning Zone 30

DATA IS DEEMED RELIABLE BUT IS NOT GUARANTEED ACCURATE BY THE REALTORS® ASSOCIATION OF EDMONTON. COPYRIGHT 2025 BY THE REALTORS® ASSOCIATION OF EDMONTON. ALL RIGHTS RESERVED. Trademarks are owned or controlled by the Canadian Real Estate Association (CREA) and identify real estate professionals who are members of CREA (REALTOR®, REALTORS®) and/or the quality of services they provide (MLS®, Multiple Listing Service®)

Listing information last updated on March 14th, 2025 at 6:47am MDT