

Courtesy Of Chris Broadhurst Of RE/MAX River City

\$185,950 - 101 10520 80 Avenue, Edmonton

MLS® #E4418454

\$185,950

2 Bedroom, 2.00 Bathroom, 944 sqft

Condo / Townhouse on 0.00 Acres

Queen Alexandra, Edmonton, AB

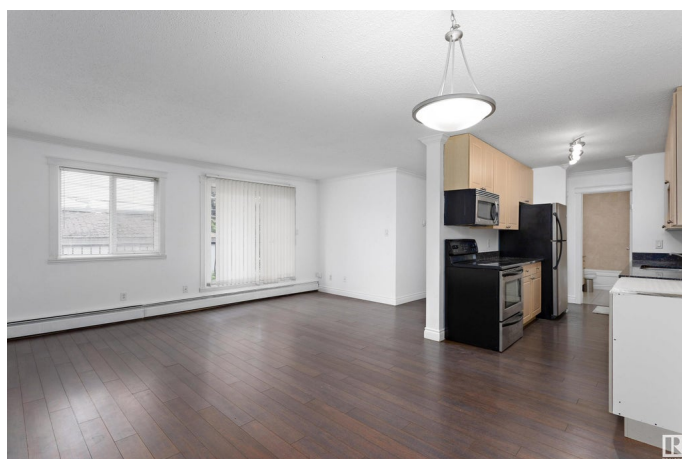
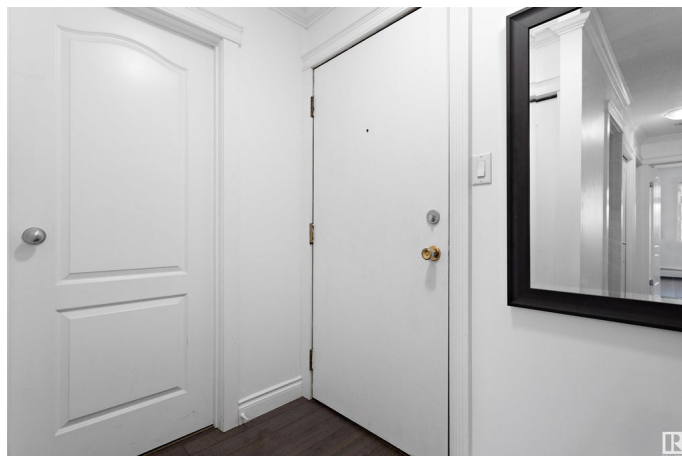
Amazing opportunity for ownership or investment. A can't beat location just off Whyte Ave and all that offers, this spacious 2 bedroom, 2 bathroom unit has it all in a nice open concept and affordable package. Unit also offers in-suite laundry and storage which offers a level of convenience not many similar units do. Transit, shops, entertainment, parks, the U of A and our world renowned river valley are steps away and everything that makes this a must to consider.

Built in 1981

Essential Information

MLS® #	E4418454
Price	\$185,950
Bedrooms	2
Bathrooms	2.00
Full Baths	2
Square Footage	944
Acres	0.00
Year Built	1981
Type	Condo / Townhouse
Sub-Type	Lowrise Apartment
Style	Single Level Apartment
Status	Active

Community Information



Address	101 10520 80 Avenue
Area	Edmonton
Subdivision	Queen Alexandra
City	Edmonton
County	ALBERTA
Province	AB
Postal Code	T6E 1V3

Amenities

Amenities	Security Door, Storage-In-Suite
Parking	Stall

Interior

Appliances	Dishwasher-Built-In, Dryer, Microwave Hood Fan, Refrigerator, Stove-Electric, Washer, Window Coverings
Heating	Baseboard, Water
# of Stories	4
Stories	1
Has Basement	Yes
Basement	None, No Basement

Exterior

Exterior	Wood, Brick, Stucco
Exterior Features	Back Lane, Landscaped, Playground Nearby, Public Transportation, Schools, Shopping Nearby
Roof	Tar & Gravel
Construction	Wood, Brick, Stucco
Foundation	Concrete Perimeter

Additional Information

Date Listed	January 17th, 2025
Days on Market	91
Zoning	Zone 15
Condo Fee	\$467

DATA IS DEEMED RELIABLE BUT IS NOT GUARANTEED ACCURATE BY THE REALTORS® ASSOCIATION OF EDMONTON. COPYRIGHT 2025 BY THE REALTORS® ASSOCIATION OF EDMONTON. ALL RIGHTS RESERVED.Trademarks are owned or controlled by the Canadian Real Estate Association (CREA) and identify real estate professionals who are members of CREA (REALTOR®, REALTORS®) and/or the quality of services they provide (MLS®, Multiple Listing Service®)

Listing information last updated on April 18th, 2025 at 12:32am MDT