

\$124,500 - 103 1 Junction Drive, Penhold

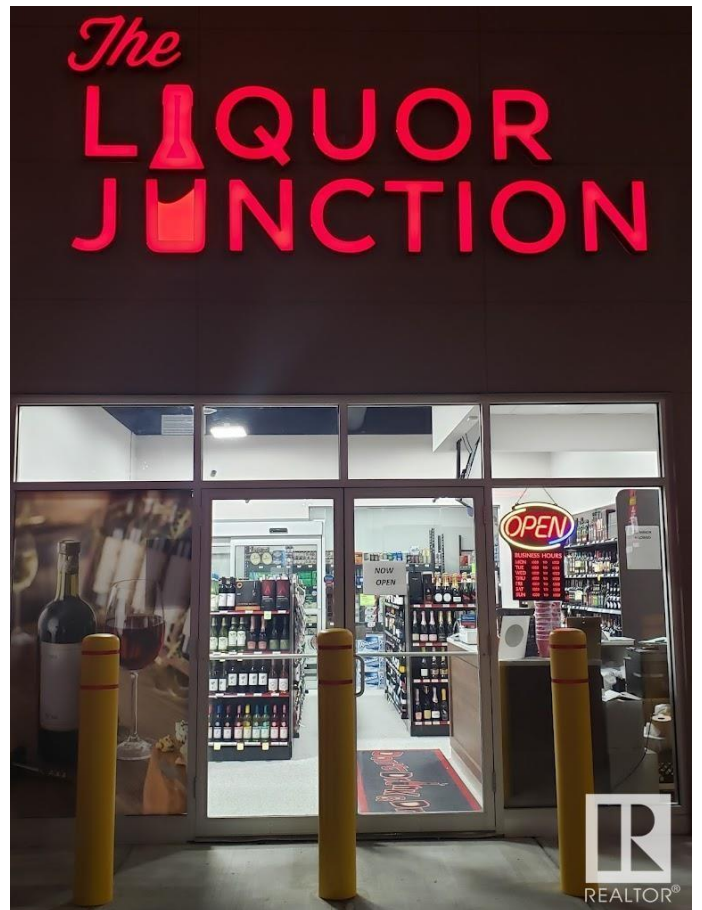
MLS® #E4417482

\$124,500

0 Bedroom, 0.00 Bathroom,
Business on 0.00 Acres

None, Penhold, AB

Established liquor store, built brand new in 2020, for sale in rapidly growing Central Alberta! Located in a busy plaza along with other big franchises including Tim Hortons, Burger King, Petro Canada Gas station/truck stop, Pizza Pizza etc. bringing in a lot of foot traffic. This sale includes business only, no real property.



Essential Information

| | |
|-----------|-----------|
| MLS® # | E4417482 |
| Price | \$124,500 |
| Bathrooms | 0.00 |
| Acres | 0.00 |
| Type | Business |
| Status | Active |

Community Information

| | |
|-------------|----------------------|
| Address | 103 1 Junction Drive |
| Area | Penhold |
| Subdivision | None |
| City | Penhold |
| County | ALBERTA |
| Province | AB |
| Postal Code | T0M 1R0 |

Additional Information

| | |
|-------------|-------------------|
| Date Listed | January 9th, 2025 |
|-------------|-------------------|

| | |
|----------------|---------|
| Days on Market | 64 |
| Zoning | Zone 90 |

DATA IS DEEMED RELIABLE BUT IS NOT GUARANTEED ACCURATE BY THE REALTORS® ASSOCIATION OF EDMONTON. COPYRIGHT 2025 BY THE REALTORS® ASSOCIATION OF EDMONTON. ALL RIGHTS RESERVED. Trademarks are owned or controlled by the Canadian Real Estate Association (CREA) and identify real estate professionals who are members of CREA (REALTOR®, REALTORS®) and/or the quality of services they provide (MLS®, Multiple Listing Service®)

Listing information last updated on March 14th, 2025 at 8:17pm MDT