

Courtesy Of Michael A Pavone Of RE/MAX Elite

# **\$1,099,000 - 13415 103 Avenue, Edmonton**

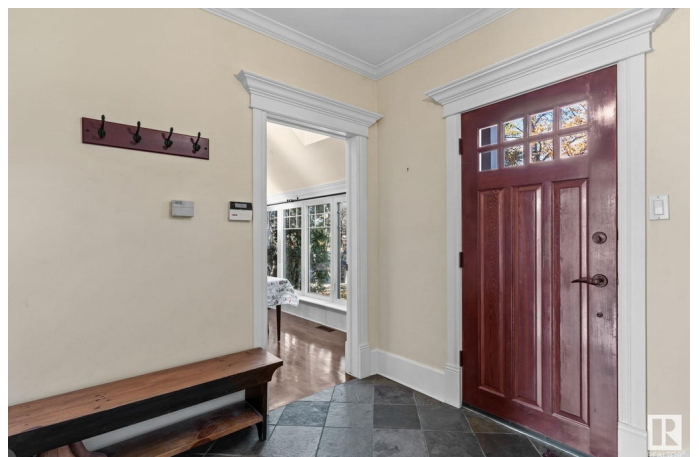
MLS® #E4412246

**\$1,099,000**

5 Bedroom, 3.50 Bathroom, 2,069 sqft  
Single Family on 0.00 Acres

Glenora, Edmonton, AB

Welcome to this craftsman-style 2-storey with LOTS OF CHARACTER in the heart of OLD GLENORA! Walking distance to Alexander Circle, Glenora School, the River Valley, and Downtown. The French classic interior features VAULTED 9-FT CEILINGS, crown moulding, and BIRCH HARDWOOD throughout! The kitchen is equipped with NEW APPLIANCES, INCLUDING A GAS RANGE, and a spacious eat-in area WITH ACCESS TO THE BACKYARD! Upstairs features the primary suite with DUAL CLOSETS and 3-piece ensuite. Three additional bedrooms and a bright 4-piece bathroom with a skylight complete the upper level. The fully finished basement adds even more living space, complete with a bonus room with an electric fireplace, an extra bedroom, and a 4-piece bath. The PRIVATE, FULLY FENCED and LANDSCAPED YARD is perfect for entertaining! Featuring a LARGE DECK, patio, and firepit area! An oversized detached double garage completes this must-see property in one of Edmonton's most sought-after neighborhoods. Experience the best of Glenora living!



Built in 1946

## **Essential Information**

MLS® #                    E4412246

Price	\$1,099,000
Bedrooms	5
Bathrooms	3.50
Full Baths	3
Half Baths	1
Square Footage	2,069
Acres	0.00
Year Built	1946
Type	Single Family
Sub-Type	Detached Single Family
Style	2 Storey
Status	Active

### Community Information

Address	13415 103 Avenue
Area	Edmonton
Subdivision	Glenora
City	Edmonton
County	ALBERTA
Province	AB
Postal Code	T5N 0S3

### Amenities

Amenities	Ceiling 9 ft., Deck, Patio, Skylight, Vinyl Windows, See Remarks
Parking	Double Garage Attached, Over Sized, Rear Drive Access

### Interior

Interior Features	ensuite bathroom
Appliances	Dishwasher-Built-In, Dryer, Garage Opener, Oven-Microwave, Refrigerator, Stove-Gas, Washer
Heating	Forced Air-2, Natural Gas
Fireplace	Yes
Fireplaces	Insert, Marble Surround, Stone Facing
Stories	3
Has Basement	Yes
Basement	Full, Finished

### Exterior

Exterior	Wood, Composition
----------	-------------------

Exterior Features	Back Lane, Fenced, Landscaped, Public Transportation, Schools, Treed Lot
Roof	Asphalt Shingles
Construction	Wood, Composition
Foundation	Concrete Perimeter

### **Additional Information**

Date Listed	October 31st, 2024
Days on Market	155
Zoning	Zone 11

DATA IS DEEMED RELIABLE BUT IS NOT GUARANTEED ACCURATE BY THE REALTORS® ASSOCIATION OF EDMONTON. COPYRIGHT 2025 BY THE REALTORS® ASSOCIATION OF EDMONTON. ALL RIGHTS RESERVED. Trademarks are owned or controlled by the Canadian Real Estate Association (CREA) and identify real estate professionals who are members of CREA (REALTOR®, REALTORS®) and/or the quality of services they provide (MLS®, Multiple Listing Service®)

Listing information last updated on April 4th, 2025 at 1:32pm MDT