

\$1,031,000 - 200 9622 42 Avenue, Edmonton

MLS® #E4354499

\$1,031,000

0 Bedroom, 0.00 Bathroom,
Office on 0.00 Acres

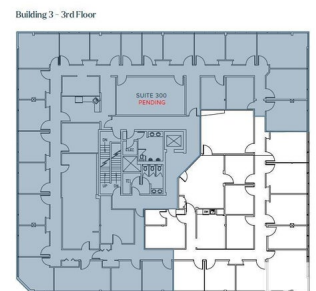
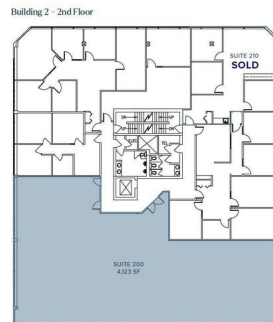
Strathcona Industrial Park, Edmonton, AB

Welcome to Whitemud Business Park! This established southside office park has recently underwent a condo conversion so units are now for sale! Sizes range from 915 Sq. Ft. up to 6,964 Sq. Ft. The park has a campus-like environment designed to enhance connectivity and collaboration. On-site amenities include a gym space exclusive to building occupants and an outdoor eating/gathering area soon to be improved. Great access to Whitemud Drive, QEII, and Anthony Henday Drive. This particular unit is 4,123 Sq. Ft. of developed office space with over 20 perimeter offices with windows, kitchen area, and meeting rooms. A summary of all current availabilities can be found on the brochure, we may also have other units coming up within the building that meet your size range.

Built in 1980

Essential Information

MLS® #	E4354499
Price	\$1,031,000
Bathrooms	0.00
Acres	0.00
Year Built	1980
Type	Office
Status	Active



Community Information

Address	200 9622 42 Avenue
Area	Edmonton
Subdivision	Strathcona Industrial Park
City	Edmonton
County	ALBERTA
Province	AB
Postal Code	T6E 5Y7

Exterior

Exterior	Mixed
Construction	Mixed

Additional Information

Date Listed	August 16th, 2023
Days on Market	597
Zoning	Zone 41

DATA IS DEEMED RELIABLE BUT IS NOT GUARANTEED ACCURATE BY THE REALTORS® ASSOCIATION OF EDMONTON. COPYRIGHT 2025 BY THE REALTORS® ASSOCIATION OF EDMONTON. ALL RIGHTS RESERVED. Trademarks are owned or controlled by the Canadian Real Estate Association (CREA) and identify real estate professionals who are members of CREA (REALTOR®, REALTORS®) and/or the quality of services they provide (MLS®, Multiple Listing Service®)

Listing information last updated on April 4th, 2025 at 8:02am MDT